

## ARM-SET

Arm Type		
ES	Standard Arm	European-Stamping Arm
EF		European-Forging Arm
RS		Regular-Stamping Arm
RF		Regular-Forging Arm
ESHO	Hold-open Arm	European-Stamping HO Arm
EFHO		European-Forging HO Arm
RSHO		Regular-Stamping HO Arm
RFHO		Regular-Forging HO Arm
WS	Sliding Arm	Wide Sliding Arm
TS		Thin Sliding Arm
WC	Concealed Arm	Wide Concealed Arm
TC		Thin Concealed Arm

**Note:**

- Do not use the hold-open arm on fire doors.
- We provide the clients OEM/ODM of the different length · width or thickness of main arm · link arm or rod.
- Forging arm can offer the higher strength; generally apply to the weight of the door is over 80 kg.
- There are a lot of different types of arm-sets we still produced.
- **Buyer can choose any type arm-set and body to become a new series door closer.**



## Body Classification

### Economical surface mount door closer body



Power size(EN): #1 、 #2

Dimensions: 183L x 47W x 39.1H

Suit for    Standard arm  
              Hold-open arm  
              Guiding rail arm

(780 & 380B series)



Power size(EN): #2 、 #3 、 #4

Dimensions: 207L x 55W x 40H

Suit for    Standard arm  
              Hold-open arm  
              Guiding rail arm

(880 & 380A series)



Power size(EN): #4 、 #5 、 #6

Dimensions: 246L x 62W x 45H

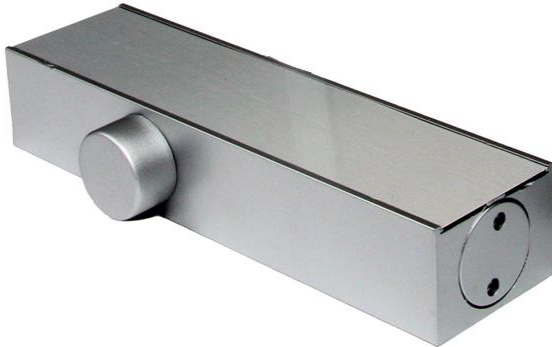
Suit for    Standard arm  
              Hold-open arm  
              Guiding rail arm

(980 series)

*PS: M-shape body can decrease the amount of aluminum so it is more economical than extrusion solid types.*

## Body Classification

### Surface mount door closer body



Power size(EN): #2 、 #3 、 #4

Dimensions: 207L x 55.1W x 38.5H

Suit for    Standard arm  
              Hold-open arm  
              Guiding rail arm

(580 series)



Power size(EN): #4 、 #5 、 #6

Dimensions: 236L x 55.1W x 38.5H

Suit for    Standard arm  
              Hold-open arm  
              Guiding rail arm

(680 series)

### Concealed door closer body



Power size(EN): #3 、 #4 、 #5

Dimensions: 230L x 56W x 30H

Suit for    concealed door closer

(280 series)

*PS: Please refer to the arm-set catalog to choose the suitable arm-set or welcome to our website to choose the ready-made door closer series.*